



In 2018, Deltapine® Pima cotton varieties demonstrated consistent yield performance in California trials.

VARIETY	YIELD (LBS/A)	TURNOUT (%)
Tulare, California		
NEW DP 359 RF PIMA	1,535	33.0
DP 348 RF PIMA	1,504	32.8
DP 341 RF PIMA	1,402	32.7
Stratford, California		
NEW DP 359 RF PIMA	2,075	33.2
DP 341 RF PIMA	1,919	30.8
DP 348 RF PIMA	1,780	30.5
Westside, California		
NEW DP 359 RF PIMA	1,963	34.1
DP 341 RF PIMA	1,913	32.9
DP 348 RF PIMA	1,889	33.2

All trials took place in 2018: GROWER TRIALS - Stratford, CA; Tulare, CA. RESEARCH TRIAL - Westside, CA.



Earlier-maturity Roundup Ready® Flex Pima variety with Fusarium Race 4 tolerance.

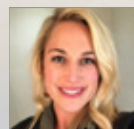


Roundup Ready Flex Pima variety with great combination of yield potential and Pima quality. Has shown excellent tolerance to Fusarium Race 4.



NEW Mid-full-maturity Roundup Ready Flex Pima variety with outstanding vigor, Fusarium Race 4 Tolerance and superior Pima fiber quality.

▶ Visit DELTAPINE.COM/FARWEST or contact your local Bayer District Sales Manager for more variety information.



REBECCA MELLEMA
District Sales Manager
rebecca.mellema@bayer.com





2018 PIMA COTTON VARIETY COMPARISONS

STATE OF CALIFORNIA

Monsanto Company is a member of Excellence Through Stewardship® (ETS). Monsanto products are commercialized in accordance with ETS Product Launch Stewardship Guidance, and in compliance with Monsanto's Policy for Commercialization of Biotechnology-Derived Plant Products in Commodity Crops. This product has been approved for import into key export markets with functioning regulatory systems. Any crop or material produced from this product can only be exported to, or used, processed or sold in countries where all necessary regulatory approvals have been granted. It is a violation of national and international law to move material containing biotech traits across boundaries into nations where import is not permitted. Growers should talk to their grain handler or product purchaser to confirm their buying position for this product.

B.t. products may not yet be registered in all states. Check with your seed brand representative for the registration status in your state.

Performance may vary from location to location and from year to year, as local growing, soil and weather conditions may vary. Growers should evaluate data from multiple locations and years whenever possible and should consider the impacts of these conditions on the growers' fields.

ALWAYS READ AND FOLLOW PESTICIDE LABEL DIRECTIONS. Deltapine®, Genuity®, Respect the Refuge and Cotton Design® and Roundup Ready® are registered trademarks of Bayer Group. LibertyLink® and the Water Droplet Design® is a trademark of BASF Corporation. ©2019 Bayer Group, All Rights Reserved. 2J5M198325



Before opening a bag of seed, be sure to read, understand and accept the stewardship requirements, including applicable refuge requirements for insect resistance management, for the biotechnology traits expressed in the seed as set forth in the Monsanto Technology/Stewardship Agreement that you sign. By opening and using a bag of seed, you are reaffirming your obligation to comply with the most recent stewardship requirements.



**LIBERTY
LINK**